

T1010 Electric Toucan



SPECIFICATIONS

Performance:

Platform Height (max.)	8.10m
Working Height	10.10m
Jib Raise Angle	+66°
Jib Lower Angle	-61°
Jib Articulation Range	127°
Maximum Horizontal Outreach	3.08m
Platform Capacity	200kg
Slewing Angle	345° Non-continuous

Dimensions:

Stowed Length	2.82m
Stowed Height	1.99m
Overall Width	0.99m
Wheelbase	1.20m
Ground Clearance	0.10m
Platform Width	0.90m
Platform Length	0.70m
Overall Jib Length	1.60m
Tailswing	0.13m

Power:

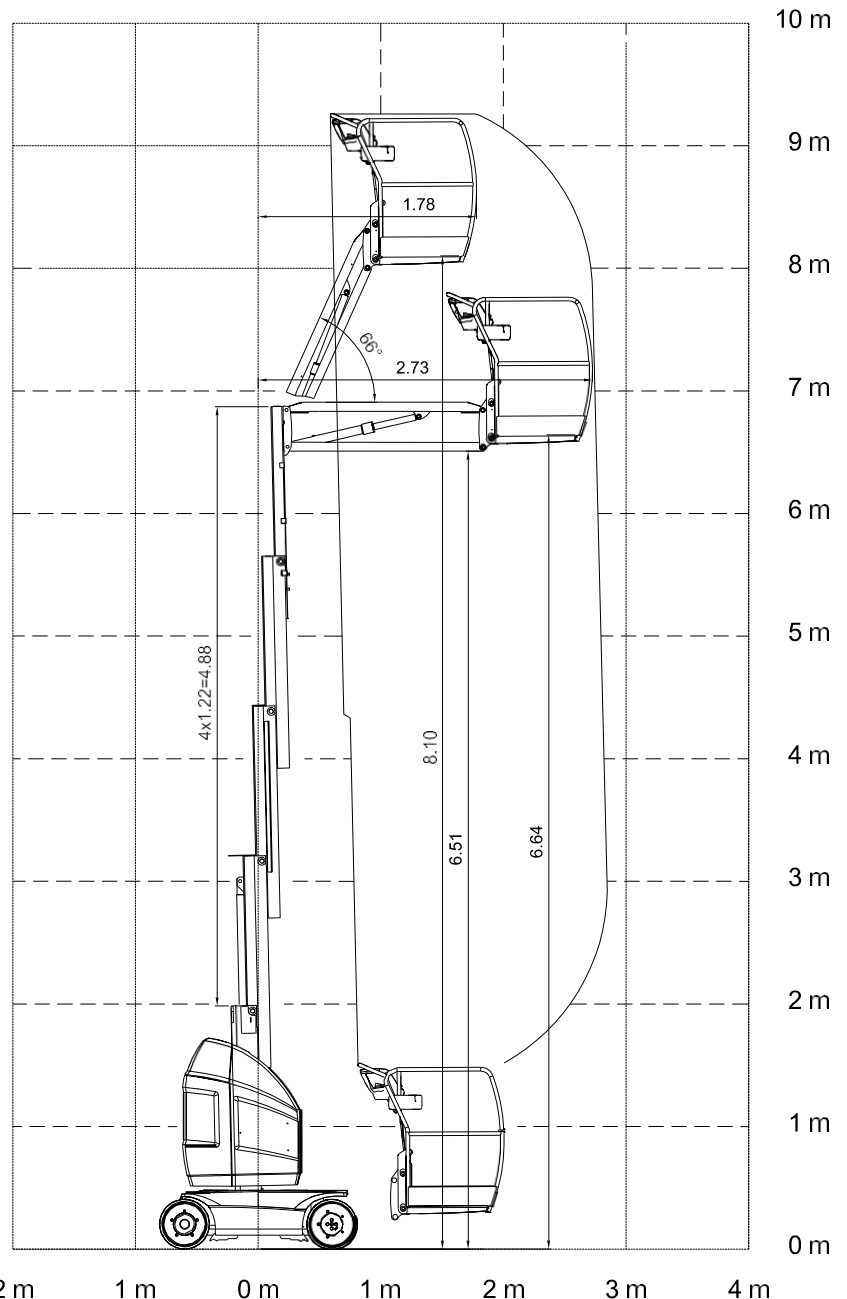
Power Source	Electric DC
DC Voltage	24V
Battery Traction	24V-240 Amp hr @ 5 hr rate

Travel:

Tyre Size	406 x 125
Tyre Type	Solid/Non-marking
Inside Turn Radius	0.55m
Outside Turn Radius	1.99m
Gradeability	25%
Drive Speed Lowered	5.50km/h
Drive Speed Elevated	0.75km/h
Drive Speed Full Elevation	0.40km/h
Maximum Ground Bearing Pressure	21kg/cm ²

Weights and Capabilities:

Hydraulic Tank Capacity	9.0 Ltr
GVW	2,990kg



STANDARD FEATURES

- Smooth control, proportional 2 wheel drive with AC brushless motors
- Variable speed lift lower jib and swing controls, on the platform
- Vertical dual-chain lift mast with articulated jib boom
- Non-marking solid tyres
- 345 degree mast rotation and 1.60m articulating jib
- 2 degree tilt alarm with indicator light
- 24V DC traction battery for continued use
- Electronic, inverter-style battery charger
- Drive orientation system